

Vessel segment

1

Profiles Plot Delete

1	(1240,106)	8.45 px
2	(1240,107)	8.44 px
3	(1240,108)	8.44 px
4	(1239,109)	8.43 px
5	(1239,110)	8.44 px
6	(1239,111)	8.47 px
7	(1239,112)	8.51 px
8	(1238,113)	8.57 px
9	(1238,114)	8.66 px
10	(1238,115)	8.77 px
11	(1238,116)	8.90 px
12	(1238,117)	9.04 px
13	(1237,118)	9.19 px
14	(1237,118)	9.31 px
15	(1237,119)	9.40 px

Include Exclude Select all

No. diameters 341

Mean diameter 10.4208 px

Std. dev. diameters 0.7541 px

Min. diameter 8.4325 px

Max. diameter 11.9026 px

Segment length 340.2... px

Diameter / length 0.0306

Tortuosity 1.0070

Visualisation

Centre Diameters

Edges Selected

Labels Optic disc

Image

Colored Image

Green Channel Image

Image Analysis

Close

Vessel segment

1

Profiles Plot Delete

1	(1617,303)	8.36 px
2	(1616,304)	8.37 px
3	(1615,304)	8.38 px
4	(1614,305)	8.38 px
5	(1613,305)	8.38 px
6	(1612,306)	8.35 px
7	(1612,306)	8.30 px
8	(1611,307)	8.23 px
9	(1610,307)	8.15 px
10	(1609,308)	8.06 px
11	(1608,308)	7.99 px
12	(1607,308)	7.93 px
13	(1606,309)	7.88 px
14	(1605,310)	7.85 px
15	(1604,310)	7.82 px

Include Exclude Select all

No. diameters	405
Mean diameter	8.2318 px
Std. dev. diameters	0.6709 px
Min. diameter	6.8000 px
Max. diameter	9.7546 px
Segment length	419.9... px
Diameter / length	0.0196
Tortuosity	1.0089

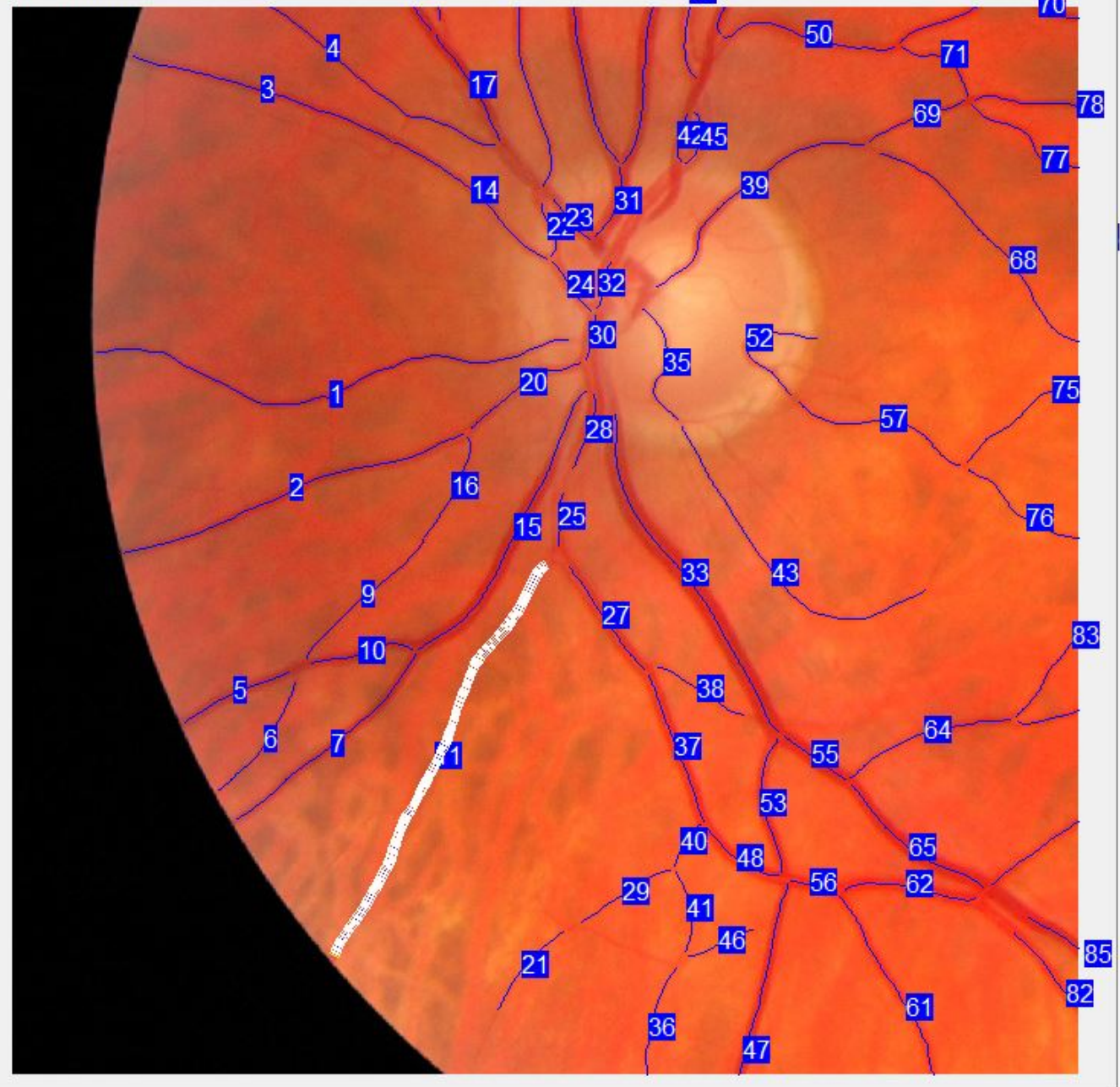
Visualisation

- Centre
- Diameters
- Edges
- Selected
- Labels
- Optic disc

Image

- Colored Image
- Green Channel Image

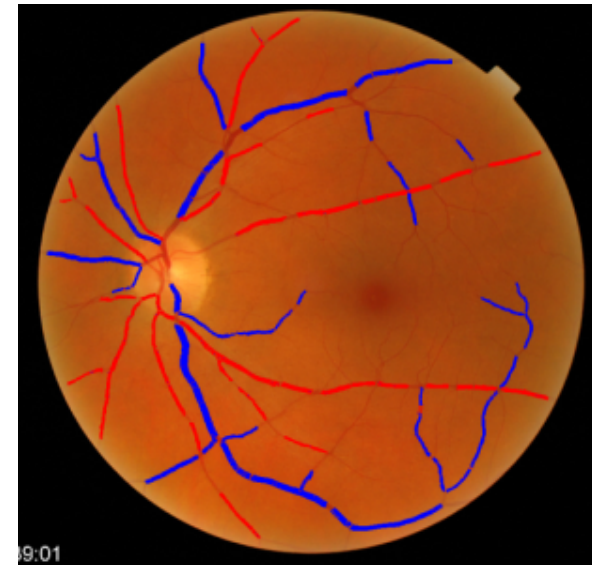
Image Analysis



Close

Automated Arteriole and Venule Recognition in Retinal Images using Ensemble Classification

Automated system for measurement of A-V ratio and quantification of A-V nicking in retinal images, which may be of use in identifying those at high risk of cardiovascular events, in need of early intervention.



Test performance	Arterioles	Venules
Detection rate	91%	77%
False +ve rate	9%	23%

Fraz et al. VISAPP 2014